



EQUIPMENT & CAPABILITIES

877-653-9640/814-653-9640 OR www.sintergy.net

“We Make It Happen!”

2130 Industrial Blvd
Reynoldsville, PA 15851



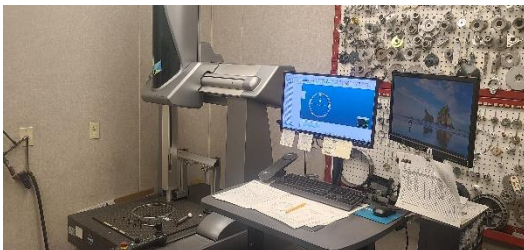
Manufacturing: 86,500 sq. ft.

Office: 2,000 sq. ft.

Property: 10 Acres (with room for growth)

Mission Statement:

To earn a leadership position, in providing high-quality components and services to our customers, utilizing empowered employees, in a lean environment, to “make it happen” the first time, every time.



Many specific Quality Inspection Tools and Equipment ensure that our products will meet customers' specifications.



State-of-the-Art Presses ranging from 20 tons – 750 tons to accommodate various types and designs of parts.

Q.C. Inspection

Vision System - Keyence (2)

CNC CMM Unit – Hexagon

CMM Unit – Reflex by Brown & Sharp

SPC ProLink Monitoring Systems (5)

Crush Tester - Carver

Crush Tester - Forney

Hardness Tester - Wilson (2)

Hardness Tester - Misawa Seiki

Visual Comparator - Gauge Master

Digital Micrometers – Mitutoyo (Multiples)

Digital Bore-Micrometers – Mitutoyo (Multiples)

Many Parts Specific Gauges

Molding / Compacting

750 Ton – Gasbarre Multi-Level Press

550 Ton - Gasbarre Multi-Level Press

500 Ton – Best Press

220 Ton – Gasbarre Standard

200 Ton – Gasbarre Standard (3)

200 Ton – Gasbarre DIE - SET (2)

100 Ton – Gasbarre Standard (3)

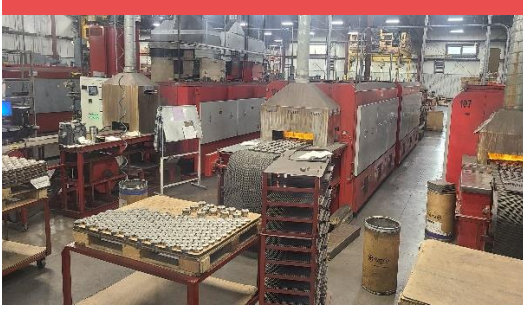
100 Ton – Stokes

60 Ton (Sizing) – South Bend

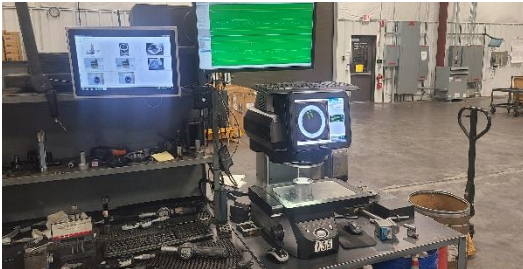
60 Ton – Gasbarre Standard (2)

30 Ton – Gasbarre Standard (2)

20 Ton – Gasbarre Standard



Continuous Sintering Furnaces ranging from 14 inches – 24 inches; we also offer multiple treatments and plating's.



Our in-house Secondary Machining has multiple options to enhance our ability to service our customers.



Our Steam Treatment System has decreased our delivery times on this process.



We have standard Shipping Containers for reduction of handling and standard quantities for your unique parts. Our Bulk Containers are reused often to support our GREEN thinking! And reduces our carbon footprint to the environment.

Atmosphere

- Endothermic Gas Generator – Abbott VS & Capacity
- Endothermic Gas Generator - Lindberg, 3000CFH (2)

Sintering / Ovens

- 14", 3 Zone Furnace - J.L. Becker
- 18" Furnace - Sinterite
- 18" Furnace - Abbott
- 24" Furnace - Sinterite
- 24", 6 Zone Furnace - Abbott
- Cooling Tower - Marley Aquatower (Dual)
- Cooling Tower - Sinterite (Dual)

Secondary Machining

- Dual Spindle w/Gantries – MW120 Murata (2)
- Machining Center – VC-3600 Doosan (2)
- CNC Lathe w/UR Robot – GT-75 Omni-Turn
- CNC Lathe – GT-75 Omni-Turn (5)
- CNC Lathe – Geno SL-400 Okuma
- Machining Center – Proto-Trak VMC-2
- CNC Lathe Auto Feed – Takamaz XL-100
- Hone - Sunnen (3)
- Quality Control Monitoring – Keyence (2)

On-site Specialties

- Steam Treating
- Tumble (Grit) Blaster- Gibson (2)
- Supersheen Tumbler - Almco
- Tumbler - Ultra Matic & Tumbler - Honite
- Vibratory Tumbler - Sample
- Oil Dip Conveyor (2)
- Oil Impregnator System (2)
- Oil Tank - Husky (2)
- Spin Dryer (2)

Support Equipment

- 2023 Peterbilt w/ 14' Box (for parts transfer)
- 2008 Chevy 3500 Flatbed (for parts transfer)
- 2012 Chevy 1500 Pick-up (for tooling & service)
- 3,000 - 4,500 lb. Fork Trucks (4)
- Air Technologies Compressors (60hp, 50hp & 25hp)
- 100-Kilowatt back-up Gas Generator

Toolroom Equipment:

- 2 Lathes, Vert. Mill - Sharp,
- Surface Grinder w/ Precision Tool Grinder,
- Hone – Sunnen, Heat-treat Oven - Lindberg

Secondary Processing (Outsourced)

- Heat Treatments & Coatings
- Multiple Plating's & Finishes
- Various Types of Machining
- Other Value-Added Processing Options Available